

# AIR STAR PD™

## Trusted, Open Local Controller for Rotary Screw/ Reciprocating Compressors

### Why you should demand AirStarPD™

When you demand energy efficiency and machine safety, demand AirStarPD™. For proven reliability, flexibility, and functionality, AirStarPD™ is the trusted aftermarket local controller to manage one Rotary Screw or Reciprocating compressor.

AirStarPD™ is built on the Allen Bradley Micro 850 PLC platform to Nema and NEC standards, with all components housed in a Nema 12 enclosure, and offering eight standard analog inputs, fourteen digital inputs, plus ten digital outputs. No proprietary hardware is provided.

For peace of mind, the HMI serves as the operator interface for all machine control functions, all set-point entry and modification, as well as all system monitoring and event history.

AirStarPD™ is your solutions-source. The data table is configured to 3PX standards, providing easy access from the 3PX-Backbone™ data concentrator for master control (sequencing) solutions, and SCADA or remote monitor routing.



### AirStarPD™ Features & Benefits

- **Elaborate HMI Functionality** allows complete configuration, tuning, troubleshooting, and operation of the compressor.
- **Familiar Allen-Bradley Modular PLC Platform** is easily supported—no proprietary parts are used.
- **Support**, whether on-site, by phone, or via modem connection, support is prompt, effective, and available 24/7.
- **Documentation** thoroughly addresses set-up, tuning, troubleshooting, and operations.
- **Ethernet Communications** are native and Modbus is optional for connection to any third party DCS, MIS, or SCADA systems.
- **Special Retrokits Available:** - Atlas Elektronikon, IR Intellisys, IR Xe, Hitachi, SullAir Supervisor, and many other Retrokits include additional instruments and transmitters for complete installation. In some instances, the PLC requires a new enclosure due to space limitations in the existing enclosure.
- **Variable Speed Drive** control is optional for Rotary Screw Compressors.
- **Compatible with 3PX-Backbone™**, which permits electronic integration with numerous third party controllers.

To learn more about AirStarPD™,  
please call Case Controls at (812) 422-2422.

# CASE iZ

GUARANTEED COMPRESSED AIR SOLUTIONS

Phone 812-422-2422 Fax 812-425-3138

Mailing Address P.O. Box 6884 • Evansville IN 47719-0884  
Street Address 1401 W. Franklin St. • Evansville IN 47710

Email [solutions@caseiz.com](mailto:solutions@caseiz.com)  
[www.caseiz.com](http://www.caseiz.com)

# AIR STAR PD™

## Allen-Bradley PLC-Based Open Local Controller

### HARDWARE SPECIFICATIONS

#### Enclosure

Rating.....Nema 4/12  
Dimensions.....24h x 24w x 12d  
Color.....Light Gray  
Weight.....115 lbs.

#### PLC Components

Processor.....A-B Micro 850  
Analog Inputs.....Eight  
Digital Inputs.....Fourteen  
Digital Outputs.....Ten

#### Front Panel Devices

HMI.....7" PanelView Plus 800 (Touch)  
Emergency Stop.....Push Button  
Control Power.....Selector Switch

#### Communications

Ethernet.....Port Used for Connection to HMI  
Serial Port.....Used for Connection to Modem  
or Optional Modbus  
Modbus.....Connection Optional

**Power Requirements** ....120VAC, 10 amps

### BASE SYSTEM

- The base system is defined as having eight analog inputs, fourteen digital inputs, and ten digital outputs which are dry contacts.
- Additional variables for display, alarming, machine trip, and start-permissive can be added and configured in the field.
- When requested, the analog inputs can be increased to eighteen.
- Instruments are not included as part of the controller and may be provided separately, or existing instruments may be reused.

### OPTIONS

#### Enclosure System

- Nema 4X SS Enclosure Rating
- Purgeable Instrument Access Door for HMI
- Vortec Panel Cooler
- Panel Air Conditioning
- Panel Heater
- Larger Display

#### PLC Components

- Analog Inputs - Up to Eighteen
- Analog Outputs - Up to Four

#### Control Scheme

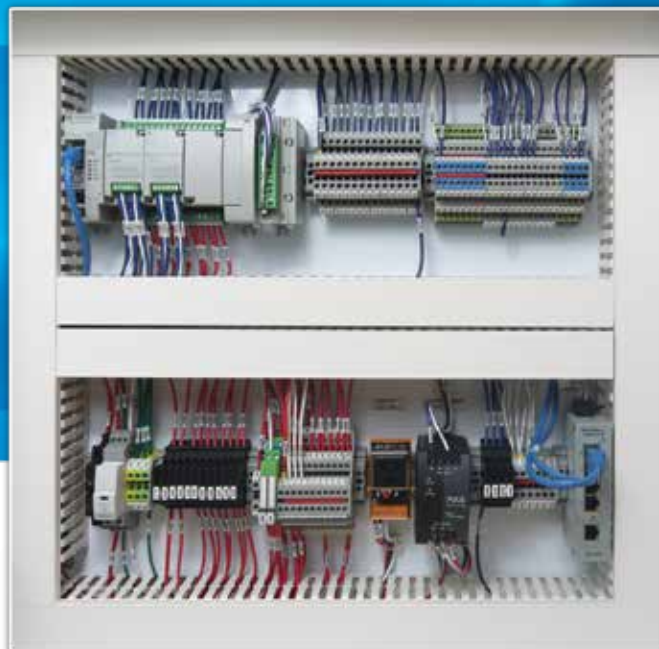
- Variable Speed Drive - Optional

#### 480V Power Package

- Oil Heater Contactor
- Blower Motor Starter
- Control Circuit Transformer
- Lockable Disconnect
- Main Motor Starter

#### Communications

- Modbus RTU
- Ethernet Switch (Option)  
Connection to DCS



\* Pictured are numerous options not included with the base system.

# CASE iZ

GUARANTEED COMPRESSED AIR SOLUTIONS

Phone 812-422-2422 Fax 812-425-3138

Mailing Address P.O. Box 6884 • Evansville IN 47719-0884  
Street Address 1401 W. Franklin St. • Evansville IN 47710

Email [solutions@caseiz.com](mailto:solutions@caseiz.com)  
[www.caseiz.com](http://www.caseiz.com)